

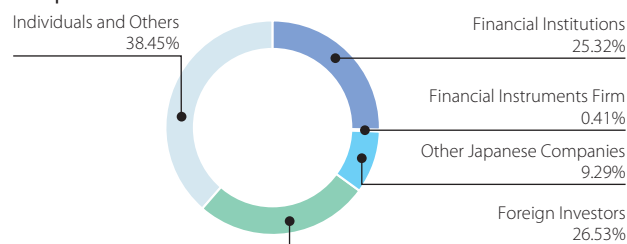
# Corporate Overview/Stock Information (As of March 31, 2009)

## System Corporation

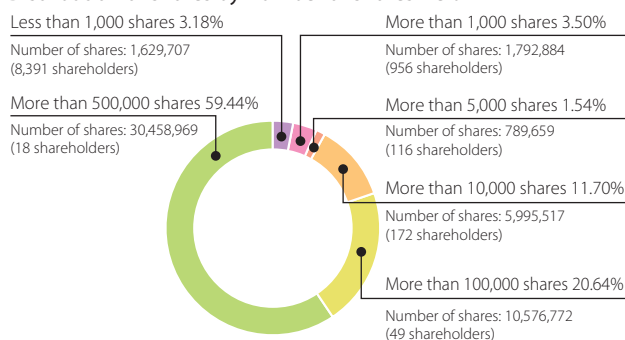
**Established** February 20, 1968  
**Number of Employees** 4,148 (consolidated basis)  
 1,890 (non-consolidated basis)  
 \*Including part-time employees  
**Fiscal Year** April 1 - March 31  
**Shareholders' Meeting** In June  
**Number of Shares Authorized** 149,672,000 shares  
**Number of Shares Issued** 51,243,508 shares  
**Paid-in Capital** ¥8,685 million  
**Stock Listings** Tokyo Stock Exchange, First Section  
 Osaka Securities Exchange, First Section  
 November 1995: Listed on Osaka Securities Exchange, Second Section  
 July 1996: Listed on Tokyo Stock Exchange, Second Section  
 March 2000: Listed on Tokyo Stock Exchange, First Section and  
 Osaka Securities Exchange, First Section  
**Ticker Code** 6869  
**Transfer Agent** Mitsubishi UFJ Trust and Banking  
 Corporation  
**Independent Auditor** Deloitte Touche Tohmatsu  
**Rating** A (Rating and Investment  
 Information, Inc (R&I))  
 Indexes  
 Russell/Nomura Japan Equity Indexes  
 FTSE Japan Index  
 NOMURA400  
 DSI (Daiwa Stock Indices)  
 S&P Japan 500



## Composition of Shareholders



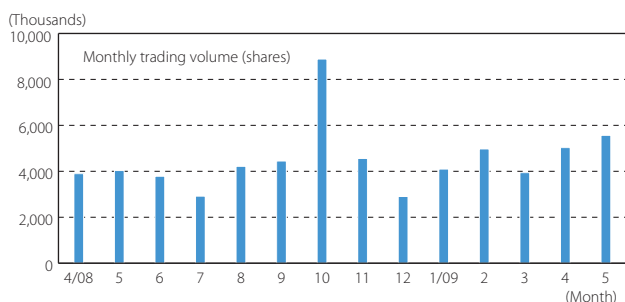
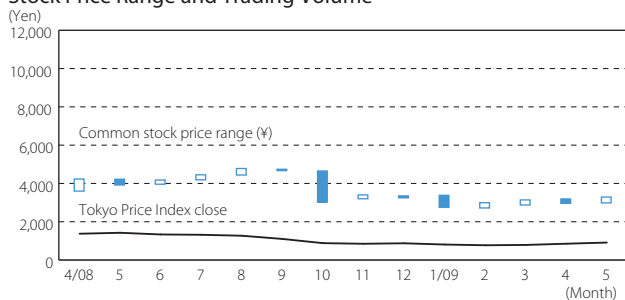
## Distribution of Shares by Number of Shares Held



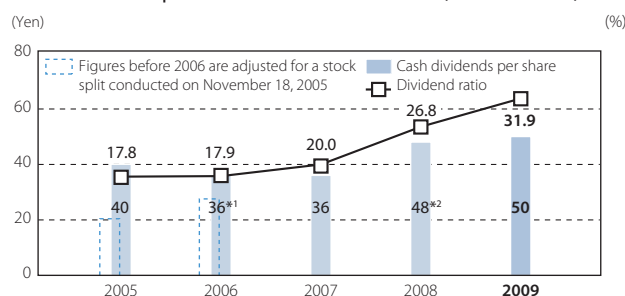
## Principal Shareholders

Shareholders	Number of shares held (Thousands)	Percentage of shareholding
Japan Trustee Services Bank, Ltd. (Trust account)	5,515	10.76
Tadako Nakatani	4,003	7.81
Tadashi Nakatani	2,995	5.85
Nakatani Kosan, Ltd.	2,574	5.02
The Master Trust Bank of Japan, Ltd. (Trust account)	2,319	4.53
THE CHASE MANHATTAN BANK, N. A. LONDON SECS LENDING OMNIBUS ACCOUNT	1,816	3.55
National Mutual Insurance Federation of Agricultural Cooperatives	1,640	3.20
Kazuko Ietsugu	1,531	2.99
Taeko Wada	1,531	2.99
TAIYO FUND, L.P.	1,343	2.62

## Stock Price Range and Trading Volume



## Cash Dividends per Share and Dividend Ratio (Consolidated)



\*1: The shares of shareholders was split two for one on November 18, 2005.

\*2: Including special dividends of ¥8 commemorating the 40th anniversary of the Company's founding.

### Dividend Policy

We have been indicating a policy of stockholders' equity to balance both investment for sustainable growth and contribution toward shareholders. Upon this policy we raise strategy to keep dividend payout ratio as approximately 20% on consolidated financial performance.